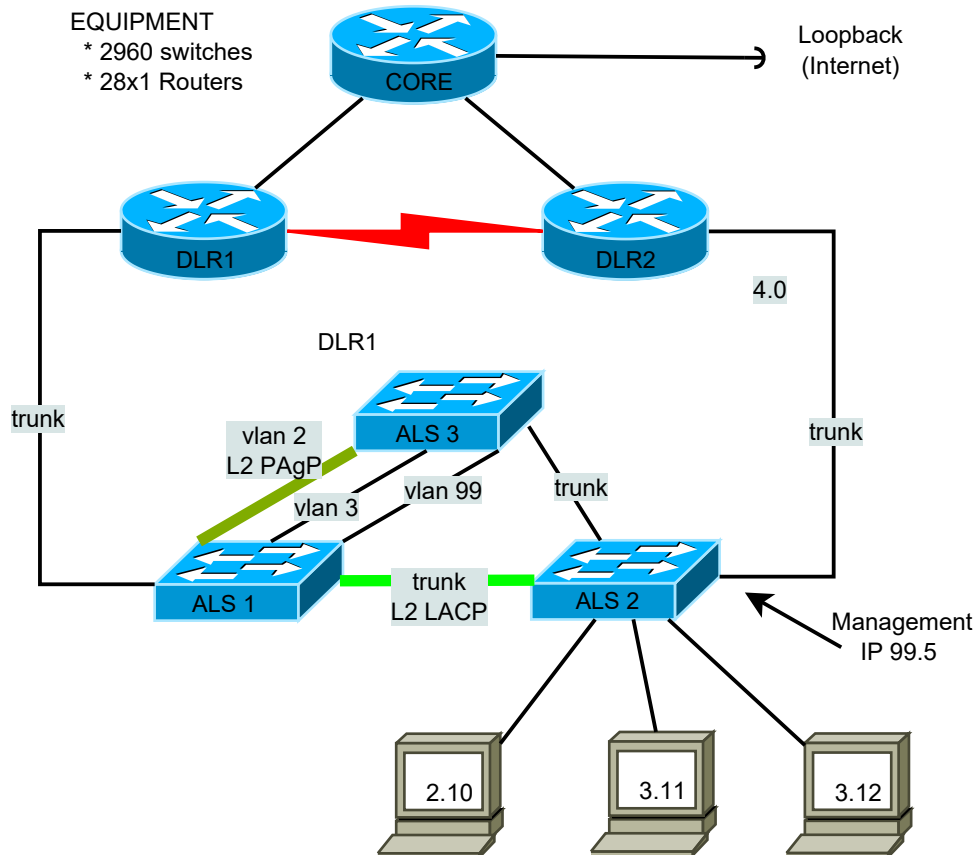


A BCMSN CHALLENGE IN A CCNA-POD



REQUIREMENTS

- 1a. Configure according to the diagram shown above using /24 net's.
 - 1b. Use login password, enable secret, banner, SSH and no telnet everywhere
 - 1c. Use VLAN 99 as native and configure all VLANs everywhere, but CORE.
 - 1d. Disable proxy-ARP everywhere.
- 2a. Configure VRRP for 2.0 and GLBP for 3.0,
 VRRP should use DLR1 first, GLBP should use DLR2 first.
 - 2b. Configure HSRP for 99.x (ALSx) and use load-balancing
 - 2c. Configure tracking and preemption in HSRP, VRRP and GLBP
 - 2d. Make sure 3.10 uses one router and 3.11 the other (arp -a on PC)
 - 2e. Make sure ALS1 and ALS2 use different default gateways.
 - 2f. How many things have redundancy in this topology?
 Disconnect one thing at a time and measure recovery time.
- 3a. Configure static MAC-address for PC 2.10 and port security max
 - 3b. Configure port-security sticky for all the PC 3.11
 - 3c. Configure DHCP-snooping without option 82 for PC 3.12
 - 3d. Try enabling option 82 and dynamic ARP-inspection
 - 3e. Try to break security, one attacked port/PC at a time.
- 4a. Configure primary and secondary root bridge.
 - 4b. Create a MST for VLAN 2 and 3
 - 4c. Implement where applicable:
 portfast, UDLD, BPDU-guard, root-guard
 (Not applicable: CST backbone-fast, CST uplink-fast)
 - 4d. Are all RSTP port-types represented in this topology?
 Try to create those who are missing.