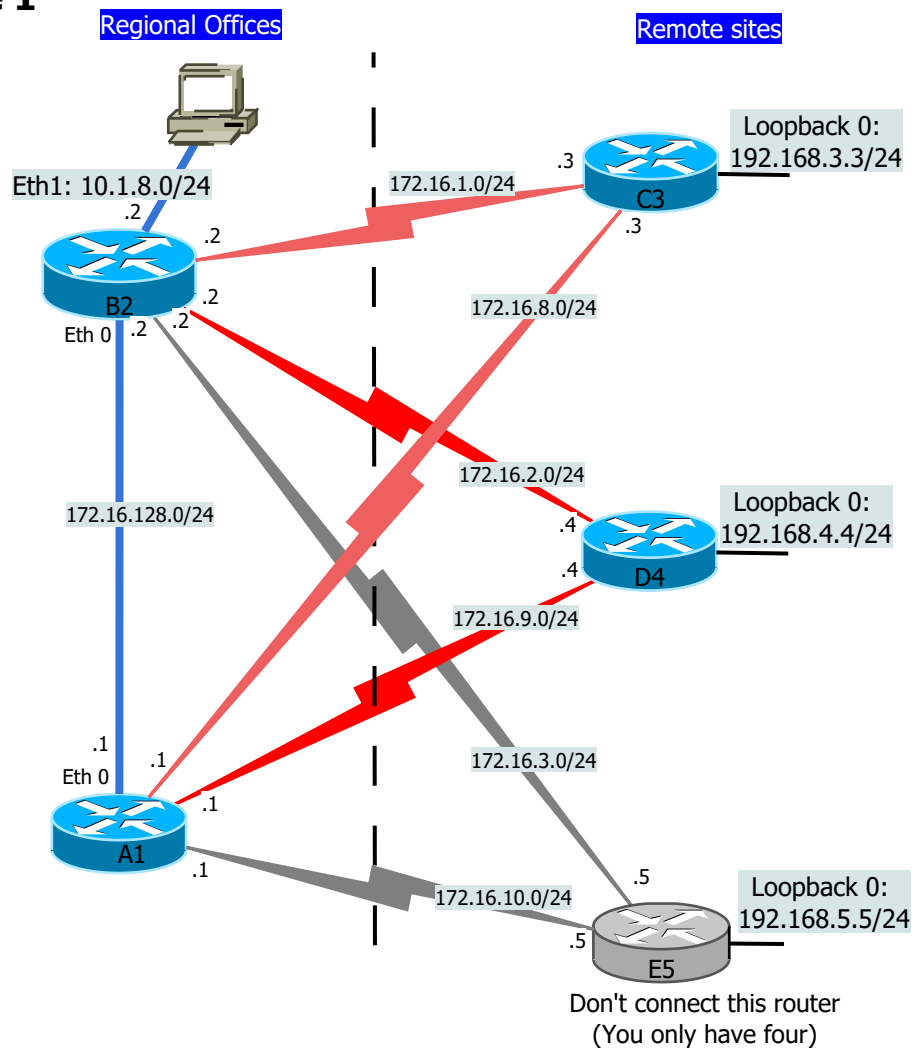


Challenge 1 EIGRP



1. TOPOLOGY

- 1a. Cable the above topology, except the grey router E5
(The topology is described in the book on page 162-164)
("Examine the query process..."). Use shutdown on e1 on Router A.
- 1b. Configure all links and enable EIGRP.

1c. Examine the three tables (neighbour, topology and routing) to make sure everything is OK

2. ROUTE SUMMARIZATION

- 2a. Limit query-ranges by route summarization on A and B only. Use 10.0.0.0/8 for 10.1.8.0/24
- 2b. How does this affect the FD etc to 10.1.8.0 on D?

3. METRICS

- 3a. Remove all occurrences of route summarization and check all routing-tables
- 3b. Change the metric/bandwidth on all serial links so that the path A-D-B and A-C-D is preferred over A-B (i.e. make the serial links "better" than ethernet)
- 3c. Check all routing-tables

4. STUB

- 4a. Use the proper stub-commands on C and D so that the network prefers A-D path again.
- 4b. Do we have full connectivity now?
- 4c. Why don't we have full redundancy now? What link(s) is missing?